



Bathing establishment Fact Sheet

Name of bathing establishment	ROYAL
Address	Via Arenile, 21
City	Forte dei Marmi (Lu)
Contacts	Telephone +39 0584 82904
Website	http://www.bagnoroyal.it/

TESTED BY: [Handy Superabile Social Promotion Association in summer 2023](#)

Please note The following information refers to the verification date shown at the bottom of each sheet. The Association is not responsible for any significant changes made to the property after the visit.

Summary

Bathing establishment Fact Sheet	1
Arrival at the facility	2
Private/public parking.....	2
Pathway from the parking lot to the main entrance	2
Reception welcome.....	3
Bar/restaurant	4
Internal pathways and common services	5
Internal pathways.....	5
Toilet and shower accessible to guests with reduced mobility	5
Changing room	7
Beach.....	8
Children's play area	10
Pool.....	10
Medical practices/health facilities.....	12

_Toc155189883

Project carried out with the contribution of





Arrival at the facility

Private/public parking

Presence of private parking	YES
Fund type of private parking	gravel
Presence of parking space reserved for people with disabilities	YES
Public parking nearby	YES
Fund type of public car park	asphalt
	

Pathway from the parking lot to the main entrance

Pathway from the parking lot to the entrance	flat on a gravel surface which can make movement difficult for people in wheelchairs
There are indicators and tactile maps	NO
Useful width of door/entrance passage	greater than 90 cm





Reception welcome

Umbrella booking system	<input type="checkbox"/> Via the web <input checked="" type="checkbox"/> Via telephone <input checked="" type="checkbox"/> On site
Presence of multilingual staff	not detected
Presence of plant plan with legend of services available	NO
Presence of visuo-tactile map	NO





Noticeboard/information panel sat an average height of 130 cm in a well-lit area and a character size of at least 14 dpi with a contrast ratio greater than 4.5:1	NO
The staff has undergone training on welcoming people with various disabilities	NO

Bar/restaurant

Type of venue	Bar/restaurant
Access to the venue	flat
Useful width of door/entrance passage	90cm
Bar counter	110cm
Type of tables	with 4 legged
Space under the floor tables	67 cm
Multilingual menu	not detected
Menu with large print characters	NO
Braille menu	NO
Table service for people with disabilities	YES
Availability of food for celiacs	<input type="checkbox"/> bread <input type="checkbox"/> pasta <input type="checkbox"/> cookies <input type="checkbox"/> ice creams <input type="checkbox"/> pre-packaged foods





Internal pathways and common services

Internal pathways

<p>Indicate whether the pathways connecting the entrance to the beach are flat or with ramps in addition to those already described</p>	<p>obstacle-free pathways</p>


Toilet and shower accessible to guests with reduced mobility

Number of toilets accessible/usable by guests with reduced mobility	1
Access to the venue	flat
Useful width of entrance door	96 cm
Toilet height	50cm
Open front toilet seat	YES
Support handles	on both sides
Flexible shower next to the toilet	NO
Free space on the sides of the toilet	to the left greater than 90 cm

Project carried out with the contribution of





	To the right 20cm Front greater than 90 cm
Electric bell/telephone	YES
Washbasin with space underneath for a wheelchair	greater than 70 cm
Height from the ground to the lower edge of the mirror	not sufficient for use by people in a wheelchair
Baby changing table	not detected
	
	
Shower accessible to guests with reduced mobility available	NO only shower cubicle with narrow spaces and 8 cm high step and outdoor shower with 8 cm high step





Changing room

Changing room accessible to guests with reduced mobility available	YES
Access to the venue	flat
Useful width of door/entrance passage	90cm
Dimensions of the changing room	not detected
Presence of cot	NO
Coat stand height from the floor	greater than 140 cm and not accessible to people in wheelchairs



Project promoted by



Regione Toscana



Beach

Type of beach	sand
Access to the beach	flat
Walkway to reach the umbrellas	YES
Type of walkway	cement
Walkway width	90cm



Project carried out with the contribution of



Presidenza del
Consiglio dei Ministri
Ministro per la disabilità



Removable Platform between the walkway and the umbrella station to facilitate the passage and parking wheelchair	YES
Amphibious beach chair available for helping people with reduced mobility to enjoy swimming (owned by the establishment or by association)	YES



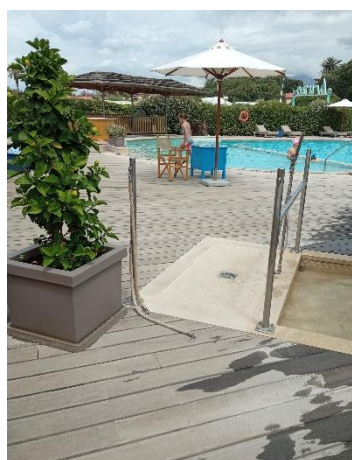


Children's play area

Children's play area	missing
There are games for children with reduced mobility	NO

Pool

The property has a swimming pool	YES
Access to the swimming pool	flat
Useful width of entrance gate	90cm
Bathing aids for guests with reduced mobility	amphibious chair





Floor-level pool showers





Medical practices/health facilities

Hospitals near the facility	Versilia Hospital SS 1, 335, 55049 Camaione LU Telephone: 0584 6051
Other healthcare facilities	ASL Health District No. 12 Viareggio Via Sant'Elme, 30 Tel. 058483873 Green Cross Viale Italico, corner the via Risorgimento Tel. 058484013 Free first aid for white codes Night medical guard Tel. 0584 83896 (8pm-8am) Mercy Via PI da Carrara, 32 Tel. 0584752133/0584 752149 Medical service "San Camillo" nursing home Via PI da Carrara, 37 Tel. 0584 7391 Dialysis service Green Cross Viale Italico, corner the via Risorgimento Tel.058484013 affiliated with AUSL

TESTED BY: Handy Superabile - Social Promotion Association - in summer 2023

